

MGX NO-CRACK-ALUMINUM-COATED SELF-ADHERING MEMBRANE



WITH COLORED ALUMINUM!!!



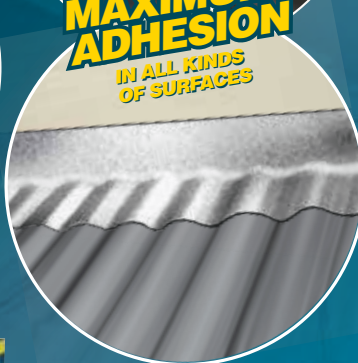
UNIQUE DOUBLE ASPHALT SURFACE



EASY APPLICATION



MAXIMUM ADHESION IN ALL KINDS OF SURFACES



Features

Self-adhering Asphalt Membrane with Colored Aluminum Coating. POWER STICK COLOR is made with MEGAFLEX modified elastomeric asphalt, and it includes a flexible aluminum coating, a central core, and a lower peel-ply silicone-coated polyethylene foil protection. Power Stick Color has great flexibility and excellent waterproof properties. The NO CRACK COLOR aluminum coating also acts as a reflective UV barrier, reducing thermal absorption and protecting the membrane from premature aging, which results in greater aluminum foil surface resistance than traditional products. No Crack Color Power Stick has a high adhesive power, even at low temperatures, and is easily installed, since it does not require the use of a torch.

No Crack Color Aluminum

NO CRACK COLOR ALUMINUM is a technological innovation developed by MEGAFLEX. It is made of aluminum composite, which provides aluminized membranes with greater mechanical resistance to tension, torsion, plying, and punching, extending the waterproofing lifespan and improving the esthetical finishes.

Unique Advantages

- Provides a COLOR roof decoration.
- Unique with Colored Aluminum.
- Maximum adhesive power.
- Does not crack, does not break; maximum reliability.
- Quick and easy installation. Does not require torch.
- Unique with double asphalt surface.
- Ideal for waterproofing areas where hot-application is unsuitable.
- Supports all kinds of surfaces.
- Higher resistance.

COLOR ALUMINUM



B1852LGX, 1760 Luis M. Drago St., Burzaco, Almirante Brown Industrial District, Buenos Aires (Argentina) / Tel. / Fax: (54-11) 4002-5000
/E-mail: info@megaflex.com.ar / www.megaflex.com.ar / Technical Department: tecnico@megaflex.com.ar

0-800-33-33-649 (MGX)

Images are only illustrative

Application

EASY APPLICATION

1



SURFACE PREPARATION

Make sure the application surface is dry, clean, steady, smooth, and free from release agents.

APPLY PRIMER

2

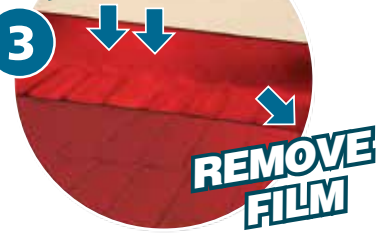


PRIMING:

It is recommended to prime the surface using solvent-based MEGAFLEX Asphalt Paint or aqueous-base MEGAFLEX Asphalt Emulsion. Paint a smooth layer of primer and let dry. Make sure the surface is clean and dry.

PRESS

3



INSTALLATION:

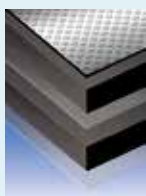
To install, remove the polyethylene peel-ply film and press the membrane onto the surface, allowing for a 10% overlapping.

Uses

Quick and easy home-made waterproofings, where a COLOR esthetic finish is also required. Power Stick Color may be used on all kinds of surfaces, including wood, metal, aluminum, ceramic tiles, cement, concrete, and canvas.

Power Stick Color provides better weather resistance, and is not damaged by low temperatures, rain, hail, or UV rays.

Power Stick Color both repairs and avoids leaks, and is ideal for fixing cracks in previously set membranes, non-walkable roofs, steep roofs, galvanized tin roofs, fiber cement roofs, tiled roofs, or wood roofs. Power Stick Color is also useful as a finish for air-conditioning system ducts and sets, metal doors and windows, thermally insulated outdoor pipelines, etc.



- No Crack Aluminum-Coating
- Oxidized Asphalt
- Polyethylene Central Core
- Elastomer-Modified Asphalt
- Silicon-Coated Polyethylene Film

How Supplied

Rolls of:

- 10 cm x 10 m
- 10 cm x 25 m
- 15 cm x 10 m
- 15 cm x 25 m
- 20 cm x 10 m
- 25 cm x 25 m
- 25 cm x 10 m
- 30cm x 10 m.

Fact Sheet

PROPERTIES	
Roll length (m)	10/25
Roll Width (cm)	5/10/15/20/25/30
Nominal Weight (Kg/m ²)	1.2
Nominal Thickness (mm)	1.2
Coating	No Crack Aluminum
Anti-Adherent Peel-Ply Film	Silicon-Coated Polyethylene
Rolling BallTest (astm D-3121)	Complies with Test

Recommendations and Caution

- Maximum stowing height is 1 meter.
- Store the rolls in their original packs, keeping the central tube on a standing position up to the moment of their installation.
- Store indoors, in ventilated room, away from rain and sunshine, at temperatures below 35°C (95°F).
- Keep stored until use.
- Protect from damages, especially the surface corners and sides.
- After installation, make sure that the peel-ply polyethylene is bound to the asphalt.
- Do not work under rainy conditions nor resume installation until the surface is completely dry.
- Temperature Range for Application: +5-50°C (41-122°F)
- Use preferably within 1 year of its manufacture date.